

## LDS 4 programmable dosing pump

Specification sheet 2012



- 32 programmable individual or every day dose times.
- Battery or mains operation.
- Highly visible blue back lit display.
- Compact IP55 Casing.

Developed for timed dosing of various applications including drain & grease traps, urinals and water treatment. The unit utilises an easy to use custom programmable control unit & our standard 200 series pump head and includes features such as: Battery status indication, voltage drop compensation (for stable pump output), flow calibration, battery backup & the option to pass code protect settings. The LDS4.01B utilises a battery pack rather than individual batteries for proven reliability. The IP55 case is custom moulded in ABS, has a small footprint and is wall mountable.

Various options are available including tube types & sizes, alternative power supplies for mains connection, slave units for dual dosing & customer branding.

For volume applications bespoke software is available to either tailor the existing unit to specific requirements or even create special products for custom applications.

### General specifications for standard unit:

- Pump output 40ml/minute.\*
- Minimum battery life of over 1 year based on normal drain dosing usage.\*
- Battery backup of 40 hours.\*
- 5mm tube connectors.
- Standard unit comes complete with 5 metres of 5x8 PVC suction/discharge hose, foot filter, tube stiffener, wall plugs and wood screws for wall mounting and battery backup.

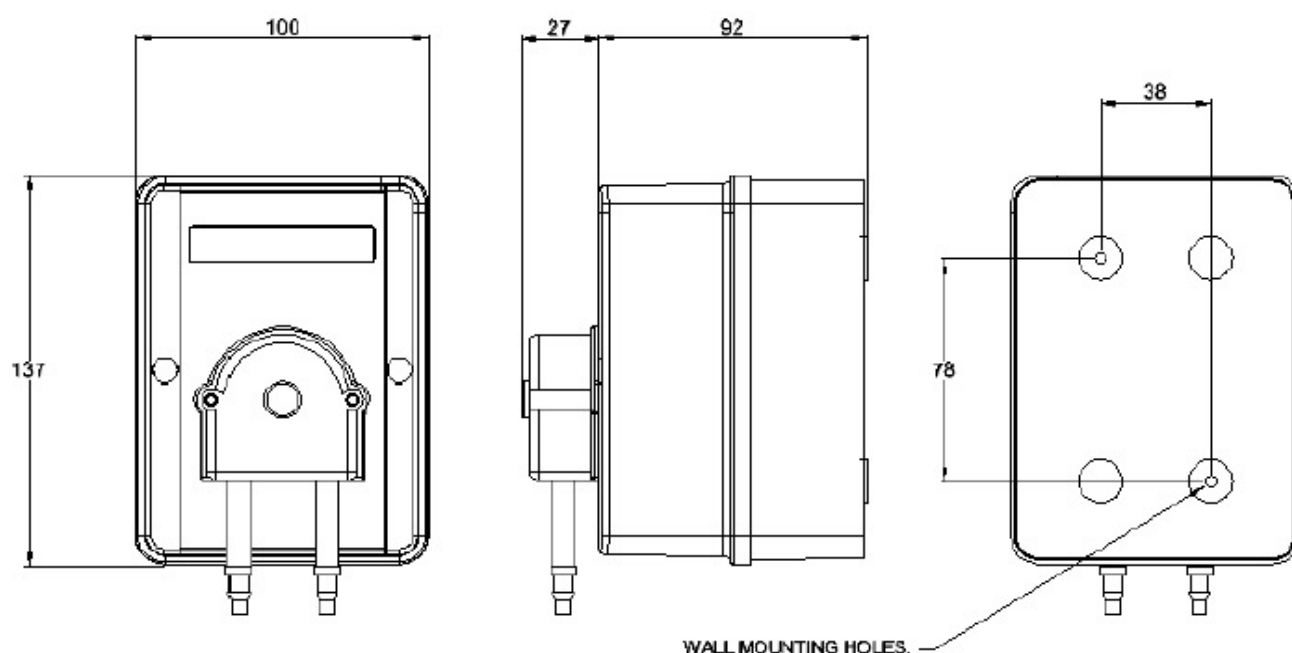
\*approximately

## Williamson Manufacturing Company Ltd

Unit 5, Lady Bee Industrial Estate, Albion Street, Southwick, West Sussex, BN42 4EP, UK.  
Tel +44(0)1273 857752 E Mail:- [sales@williamsonpumps.co.uk](mailto:sales@williamsonpumps.co.uk) Web [www.wmcpumps.com](http://www.wmcpumps.com)

Order code	Description
LDS4.01B	Battery powered dosing pump complete with battery pack. Shipping weight:- 1.6kg
LDS4.01M	Mains powered dosing pump complete with plug in PSU, including UK, EU and USA AC heads. Shipping weight:- 1.0kg
LDS4.01M-WM	Mains powered dosing pump complete with wall mount PSU. Shipping weight:- 1.0kg
LDS4.01M-INT	Mains powered dosing pump complete with internal PSU. Shipping weight:- 1.0kg
LDS4-BATT-PACK	Spare battery pack c/w plug. Shipping weight:- 0.6kg

For special options/customisation, please contact us on the phone number listed at the bottom of the page or alternatively E-mail us at [info@williamsonpumps.co.uk](mailto:info@williamsonpumps.co.uk).



## Williamson Manufacturing Company Ltd

Unit 5, Lady Bee Industrial Estate, Albion Street, Southwick, West Sussex, BN42 4EP, UK.  
 Tel +44(0)1273 857752 E Mail:- [sales@williamsonpumps.co.uk](mailto:sales@williamsonpumps.co.uk) Web [www.wmcpumps.com](http://www.wmcpumps.com)